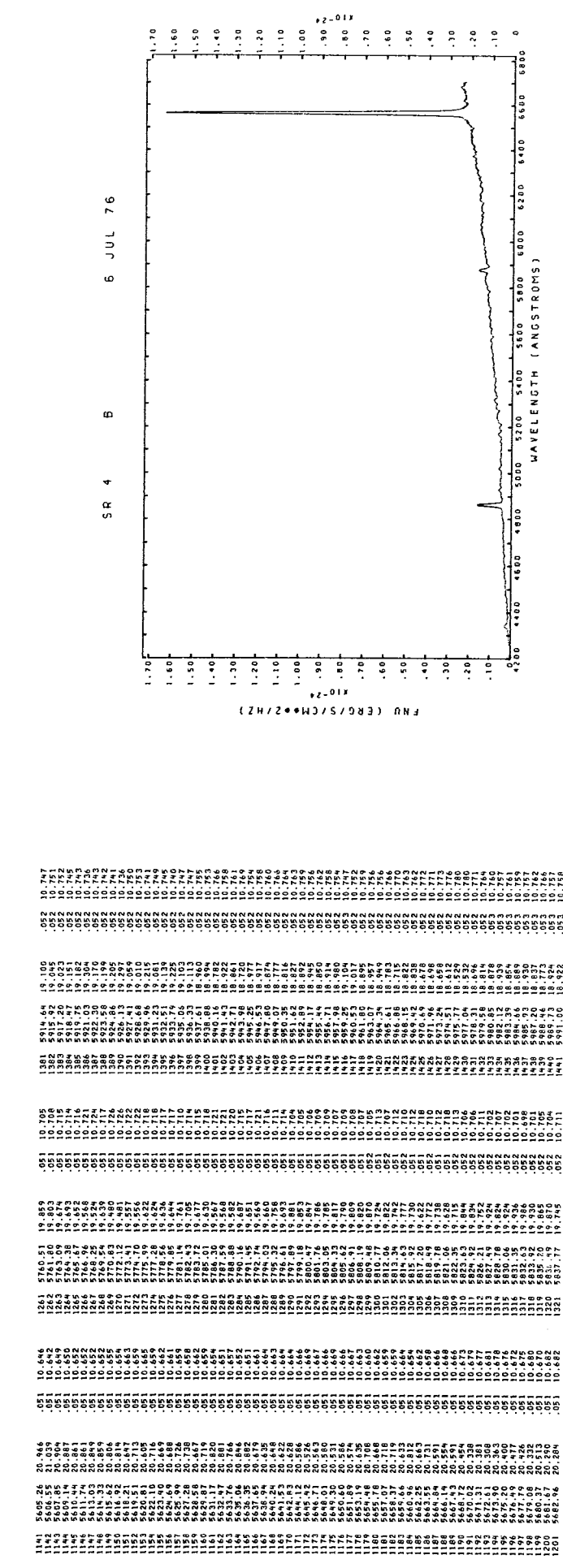


CH NO	LAMBDA (ANG)	FNU (EGCS)	SIGMA	MNU
1082	5638.81	21.423	.051	10.428
1083	5530.10	21.323	.051	10.430
1084	5531.40	21.353	.051	10.430
1085	5531.90	21.383	.051	10.430
1086	5532.39	21.413	.051	10.432
1087	5532.88	21.443	.051	10.433
1088	5533.37	21.473	.051	10.434
1089	5533.86	21.503	.051	10.435
1090	5534.35	21.533	.051	10.436
1091	5534.84	21.563	.051	10.437
1092	5535.33	21.593	.051	10.438
1093	5535.82	21.623	.051	10.439
1094	5536.31	21.653	.051	10.440
1095	5536.80	21.683	.051	10.441
1096	5537.29	21.713	.051	10.442
1097	5537.78	21.743	.051	10.443
1098	5538.27	21.773	.051	10.444
1099	5538.76	21.803	.051	10.445
1100	5539.25	21.833	.051	10.446
1101	5539.74	21.863	.051	10.447
1102	5540.23	21.893	.051	10.448
1103	5540.72	21.923	.051	10.449
1104	5541.21	21.953	.051	10.450
1105	5541.70	21.983	.051	10.451
1106	5542.19	22.013	.051	10.452
1107	5542.68	22.043	.051	10.453
1108	5543.17	22.073	.051	10.454
1109	5543.66	22.103	.051	10.455
1110	5544.15	22.133	.051	10.456
1111	5544.64	22.163	.051	10.457
1112	5545.13	22.193	.051	10.458
1113	5545.62	22.223	.051	10.459
1114	5546.11	22.253	.051	10.460
1115	5546.60	22.283	.051	10.461
1116	5547.09	22.313	.051	10.462
1117	5547.58	22.343	.051	10.463
1118	5548.07	22.373	.051	10.464
1119	5548.56	22.403	.051	10.465
1120	5549.05	22.433	.051	10.466
1121	5549.54	22.463	.051	10.467
1122	5550.03	22.493	.051	10.468
1123	5550.52	22.523	.051	10.469
1124	5551.01	22.553	.051	10.470
1125	5551.50	22.583	.051	10.471
1126	5551.99	22.613	.051	10.472
1127	5552.48	22.643	.051	10.473
1128	5552.97	22.673	.051	10.474
1129	5553.46	22.703	.051	10.475
1130	5553.95	22.733	.051	10.476
1131	5554.44	22.763	.051	10.477
1132	5554.93	22.793	.051	10.478
1133	5555.42	22.823	.051	10.479
1134	5555.91	22.853	.051	10.480
1135	5556.40	22.883	.051	10.481
1136	5556.89	22.913	.051	10.482
1137	5557.38	22.943	.051	10.483
1138	5557.87	22.973	.051	10.484
1139	5558.36	23.003	.051	10.485
1140	5558.85	23.033	.051	10.486
1141	5559.34	23.063	.051	10.487
1142	5559.83	23.093	.051	10.488



CH NO	LAMBDA (ANG)	FNU (EGCS)	SIGMA	MNU
1322	5638.81	19.488	.052	10.714
1323	5530.10	19.388	.052	10.720
1324	5531.40	19.488	.052	10.726
1325	5531.90	19.588	.052	10.732
1326	5532.39	19.688	.052	10.738
1327	5532.88	19.788	.052	10.744
1328	5533.37	19.888	.052	10.750
1329	5533.86	19.988	.052	10.756
1330	5534.35	20.088	.052	10.762
1331	5534.84	20.188	.052	10.768
1332	5535.33	20.288	.052	10.774
1333	5535.82	20.388	.052	10.780
1334	5536.31	20.488	.052	10.786
1335	5536.80	20.588	.052	10.792
1336	5537.29	20.688	.052	10.798
1337	5537.78	20.788	.052	10.804
1338	5538.27	20.888	.052	10.810
1339	5538.76	20.988	.052	10.816
1340	5539.25	21.088	.052	10.822
1341	5539.74	21.188	.052	10.828
1342	5540.23	21.288	.052	10.834
1343	5540.72	21.388	.052	10.840
1344	5541.21	21.488	.052	10.846
1345	5541.70	21.588	.052	10.852
1346	5542.19	21.688	.052	10.858
1347	5542.68	21.788	.052	10.864
1348	5543.17	21.888	.052	10.870
1349	5543.66	21.988	.052	10.876
1350	5544.15	22.088	.052	10.882
1351	5544.64	22.188	.052	10.888
1352	5545.13	22.288	.052	10.894
1353	5545.62	22.388	.052	10.900
1354	5546.11	22.488	.052	10.906
1355	5546.60	22.588	.052	10.912
1356	5547.09	22.688	.052	10.918
1357	5547.58	22.788	.052	10.924
1358	5548.07	22.888	.052	10.930
1359	5548.56	22.988	.052	10.936
1360	5549.05	23.088	.052	10.942
1361	5549.54	23.188	.052	10.948
1362	5550.03	23.288	.052	10.954
1363	5550.52	23.388	.052	10.960
1364	5551.01	23.488	.052	10.966
1365	5551.50	23.588	.052	10.972
1366	5551.99	23.688	.052	10.978
1367	5552.48	23.788	.052	10.984
1368	5552.97	23.888	.052	10.990
1369	5553.46	23.988	.052	10.996
1370	5553.95	24.088	.052	11.002
1371	5554.44	24.188	.052	11.008
1372	5554.93	24.288	.052	11.014
1373	5555.42	24.388	.052	11.020
1374	5555.91	24.488	.052	11.026
1375	5556.40	24.588	.052	11.032
1376	5556.89	24.688	.052	11.038
1377	5557.38	24.788	.052	11.044
1378	5557.87	24.888	.052	11.050
1379	5558.36	24.988	.052	11.056
1380	5558.85	25.088	.052	11.062