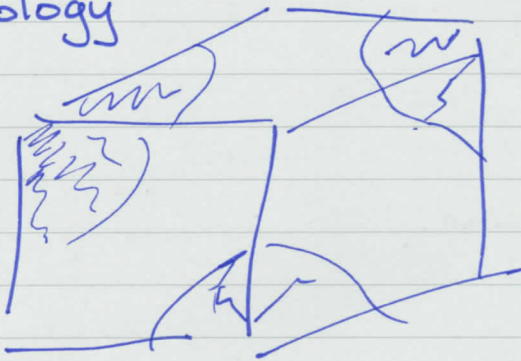
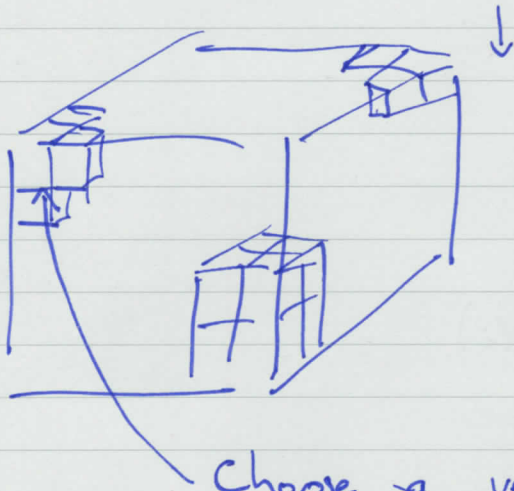


Topology



Density Grid

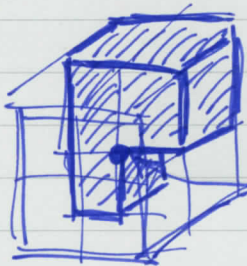


Cells above threshold set to 1

Cells below set to 0

Choose a vertex on the grid

Layout of cells is (w/ periodic boundaries)



3 cells are filled

Vertex

Get the faces in each dimension



x



y



z

If facecount = 0  $D = 4$

(cancelled by the 4-D in the sum)

else  $D = \text{facecount}$